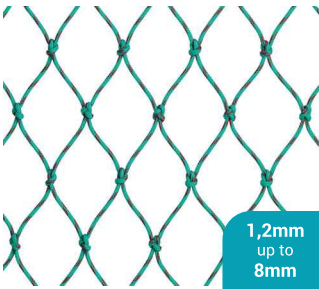




FISHING & MOORING



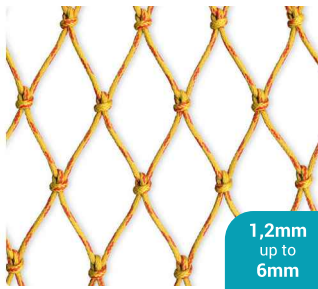
Redline Pro



Well known for its red tracer, it is the best compact netting in the market. Produced from an unique extrusion technique on High Density Polyethylene, they are the result of a skilled presence in the market for more than 50 years.

Main application:
Fishing Trawl Nets

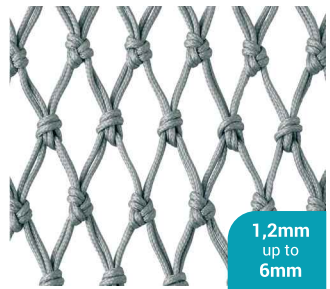
Redline Pro Gold



Redline Pro Gold keeps the compactness of Redline twines in an optimized construction to achieve higher results of knot breaking strength, whilst keeping unchangeable the excellent abrasion properties and low sand penetration in sand or mud seabed.

Main application:
Fishing Trawl Nets

Titanium

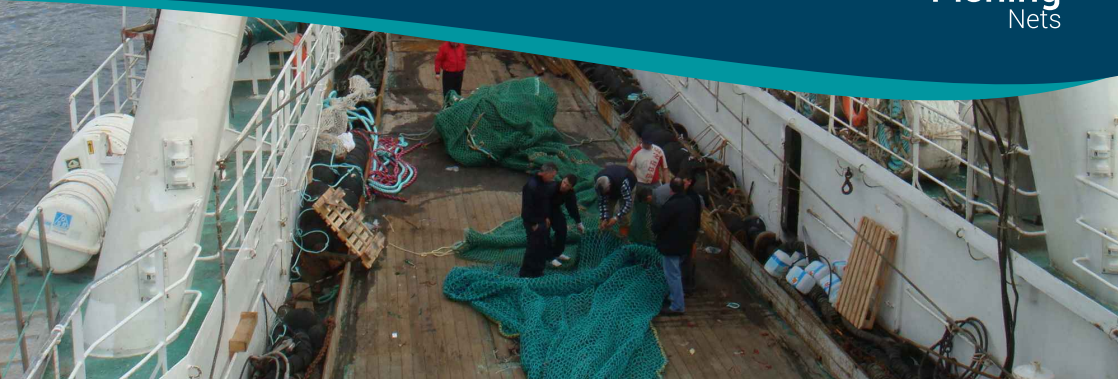


With the highest strength and durability, they must use thinner twines, providing the best solution to reduce fuel consumption and drag resistance.

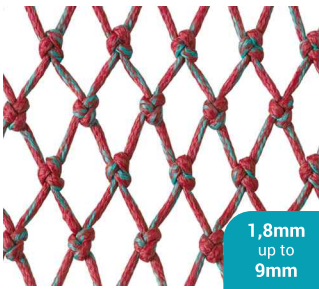
Main application:
Fishing Trawl Nets

PERFORMANCE TABLE

	KNOT TENACITY	ABRASION/RESISTANCE	SAND PENETRATION
REDLINE PRO	High	Excellent	Very Low
REDLINE PRO GOLD	Very High	Excellent	Very Low
TITANIUM	Maximum	Excellent	Low

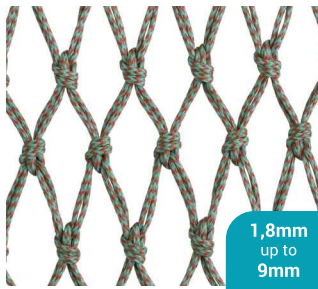


Greenline



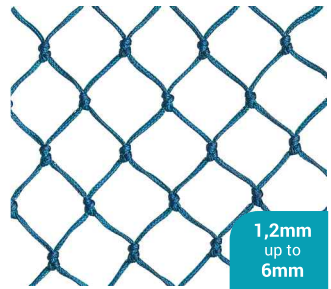
Specially developed to be used in cod-ends, it is made from high density polyethylene in a most modern extrusion technology, resulting on a high resistance soft twine that assures a better fish quality.

Greenline XL



Results from the development of GREENLINE technology, and has been specially developed for the use in cod-ends in bottom trawling. The twine has a special treatment that reinforces its stiffness and that varies according to seabed conditions.

D-Tech



High performance netting made of Dyneema® fibre. Its strength allows the use of twines with a smaller diameter. Dyneema when used in trawl nets allows a reduction of up to 50% on twine diameter, compared to polyamide twines of same breaking strength. Exclusive protective coating ensures excellent abrasion resistance and a longer life time.

PERFORMANCE TABLE

	KNOT TENACITY	ABRASION/RESISTANCE	SAND PENETRATION
GREENLINE	Very High	Excellent	Very Low
GREENLINE XL	Very High	Excellent	Very Low
D-TECH	Very High	Excellent	Very low



Movline Plus
12 and 8 Strands



Movster
12 and 8 Strands



Decline
8 Strands



Polyester
12 and 8 Strands

Product	Description	Tenacity gf/D	Specific Gravity kg/dm ³	Melting Point °C
Movline Plus	High Tenacity Composite Fibre	6.5 - 8.5	0.94	165
Movster	Combined Polyester+Movline Plus Yarns	8.0 - 9.0	1.00	165
Polyester	High Tenacity Polyester Fibre	8.5 - 10	1.38	260
Polyamide DB	High Tenacity Polyamide Fibre	8.5 - 10.5	1.14	255
Decline	High Tenacity Composite Fibre	6.0 - 7.5	0.94	165
Movspun	Spun Polypropylene Fibre	6.0 - 7.0	0.91	170
D-Tech	HMPE Multifilament Fibre	38 - 45	0.91	165



D-Tech
12 and 8 Strands



Polyamide / Polyamide DB
12 and 8 Strands and Double Braid



Movspun
12 and 8 Strands



Mooring Tails
8 Strands

Product	Recommended Application	Abrasion Resistance (1-5)	Handling / Softness
Movline Plus	Mooring and Deck Lines	3 - 4	Good
Movster	Mooring, Anchor, Tie-Up and Barge Working Lines	4 - 5	Very Good
Polyester	Tie-Up, Mooring, Decking and Anchor Lines	4 - 5	Excellent
Polyamide DB	Mooring, Anchor and Deck Lines	5 - 2 (wet)	Excellent
Deckline	Mooring and Deck Lines	3 - 4	Good
Movspun	Mooring and Towing Lines	2	Very Good
D-Tech	HMPE Multifilament Fibre	4 - 5	Excellent

Fishing Ropes



Movline Plus
3/4 Strands
(Leaded and Unleaded)



Deckline
3/4 Strands



Movspun
3/4 Strands



Polyester
3/4 Strands



Polyamide
3/4 Strands



PE Mono
3/4 Strands



PP Film
3 Strands

Product	Elongation at Break %	Sunlight Resistance (1-5)	Environmental Resistance (1-5)
Movline Plus	12 - 18	4 improved by Anti UV Additives	4
Movster	12 - 18	5	4 - 5
Polyester	10 - 18	5	5
Polyamide	14 - 28	5	5
Deckline	12 - 18	4 improved by Anti UV Additives	4
Movspun	12 - 18	3 improved by Anti UV Additives	3
D-Tech	2 - 4	5	5



Movline & Movdan

3 Strands
Unleaded and Leaded Ropes



PE Braided

Twines



Black PE Braided

Nets



Clothing



Shock Cords



Buoys



COTESI UK
10 RIPPONDEN BUSINESS PARK
OLDHAM ROAD, RIPPONDEN
WEST YORKSHIRE, HX6 4FF
UNITED KINGDOM

Phone: (01422) 821000
Fax: (01422) 821007
Email: enquiries@cotesi.co.uk

www.cotesi.co.uk

Our partner near you

