



COTESI UK

**SAFETY AT
WORK**



COTESI:

Founded in 1967, COTESI – Companhia de Têxteis Sintéticos SA, is part of one of the strongest Portuguese economic groups, VIOLAS SGPS, and since the beginning, a pioneer in the production of Agricultural and Industrial Packaging, Nets and Ropes produced from synthetic and natural fibres.

With a global presence, COTESI has production plants in Portugal, USA and Brazil, as well as distribution companies in France, UK, Germany, Denmark, Belgium, USA, Canada and Brazil.

COTESI UK is the share company responsible for the distribution in the UK and Ireland.

Technical innovation and unique accumulated know-how is part of our DNA.

Our products are used in the most advanced projects in agriculture, industry, marine, fishing, military, civil defence and safety at work.

COTESI has a Quality Assurance System certified by APCER – Portuguese Association of Certification according to ISO 9001, for the design, development and production.

All the products covered by this Catalogue are certified in accordance with all the relevant international standards.

SUSTAINABILITY AND ENVIRONMENT

COTESI is engaged in the permanent implementation of policies and procedures according to the requirements of ISO 14001. Aware of the environmental impact of its industrial activities, COTESI promotes the following principles:

- Implementation of new and clean technologies in order to guarantee the continuous reduction and prevention of pollution, aiming to a sustainable development.
- Minimize the environmental risks in all sites
- Create awareness on all employees to their input so that our goals may be achieved,
- Only use in our production, materials that are fully recyclable

That's why we say: Life is Better With COTESI



**FALL[®]
SAFE**

FALL SAFE:

FALL SAFE is recognized in the world market by users of safety and personal protection equipment, for the quality, safety, comfort of its products and offer technological solutions that generate value for the user, namely the products with the trademark FALL SAFE, FALL SAFE TRAINING and FALL SAFE INSPECTOR.

Vision, passion and pride in success are our driving forces. We want to be recognized by our competence and experience. We are oriented to the development and production of innovative products and of excellence. We are guided by the principles of quality, efficiency and social awareness.

As an independent family business, we respond quickly and flexibly to change.

FALL SAFE products are manufactured based on many years of expertise, stringent guidelines and high quality demands.

FALL SAFE has a certified Quality Assurance System according to ISO 9001.

FALL SAFE is aware of its products importance and of what they stand for on the everyday of workers, continuously improving all its machinery and applied technologies.

Working together in the UK and Irish markets, COTESI UK and FALL SAFE supply a whole range of premium Personal Protection Equipment for all sectors of the industry.



DESIGN AND DEVELOPMENT

We are much more than just a fall protection equipment manufacturing company. We develop new equipment that addresses the challenges of the everyday work. We take a hands-on approach to developing and improving our products, spending time at worksites listening to professionals who actually use our equipment every day. We rely on feedback from users and experiences in the field to develop products that will, ultimately, enhance a higher comfort and safety.

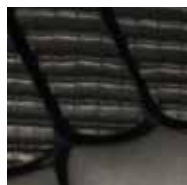


WEBBING DESIGN OPTIONS

- Water Repellent webbing for abrasion and moisture resistant.
- BioThane® - coated webbing for special heavy duty applications.
- Kevlar®, Nomex® webbing for high temperature, high strength applications.
- Reflective webbing 3M Scotchlite® woven directly into the webbing.

ERGONOMIC PADDINGS

Revolutionary 3D style, provide protection where necessary thanks to the high density open cell foam inserts placed in the key pressure points



BREATHABLE MATERIAL

All padding made with air-flow foam and linings for a maximum comfort and excellent support for extended periods of use.



ULTRA-LIGHT WEIGHT HARDWARE

Aluminum hardware with high resistance providing extra comfort and extra safety.



IZY QUICK BUCKLES

One hand use quick connect buckles, for smooth and precise adjustments.



FALL ARREST INDICATOR

Provides immediate alert that a fall has occurred, and equipment should be replaced.



HEAVY WEIGHT USER 140kg

Our Professional harnesses have been tested to additional requirement of one person weighting 140kg, this test was made following European Standard EN361 of 100kg and with additional dummy weighting 140 kg.





DROP TEST TOWER

FALL SAFE® synonyms for highest-quality. Our customers expect it, and we go out of our way to deliver it. This includes not only how we develop our products, but also how we manufacture and release them to our customers. Our exhaustive battery of tests and rigorous inspection processes ensure our products exceed EN – European standards and ANSI/ OSHA – American Standards.

LABELING

All textile labels providing product traceability are coated with a protective film for extra protection under tuff environments

RFID TAG

FALL SAFE safety equipment is fitted with RFID tags that can be scanned by a smart phone, tablet device or computer to perform safety inspections, life-time and asset management.

THE TRAINING PROGRAM

Contact us if you need a personalized program with specific contents adapted to your organization or check out our catalogue training courses and choose the one that fits your needs:

FALL SAFE® COMPETENT PERSON

Learn the current periodic examination requirements, recommendations and instructions issued by manufacturers applicable to PPE against falls from a height.

METALLIC STRUCTURES

Learn and train the appropriate manoeuvres to safely access and work in metallic structures.

TELECOMMUNICATION TOWERS

A practical training course that enable workers to use PPE in a safe manner and deal with the access and rescue from towers and other tall structures.

CONFINED SPACES

A confined space does not have to be necessarily a narrow space, but due to its variability and unpredictability it can reveal itself extremely dangerous and deadly. Learn how to act safely and in time before this scenario.

ROPE ACCESS

Rope access safely allows you to descend, ascend and traverse ropes in order to access and work in pure suspension.

WORK AND RESCUE IN WIND TURBINES

The contents of this training is directed to learn safe procedures when working in wind turbines where the aim is to apply the first response procedures in an emergency situation and minimise the accidents.



FALL SAFE INSPECTOR®

FALLSAFE® is aware of the challenges associated with the PPE inspection and its traceability as well.

Driven by the passion and pride on presenting real world solutions, FALL SAFE® has developed a software which that fills both purposes.

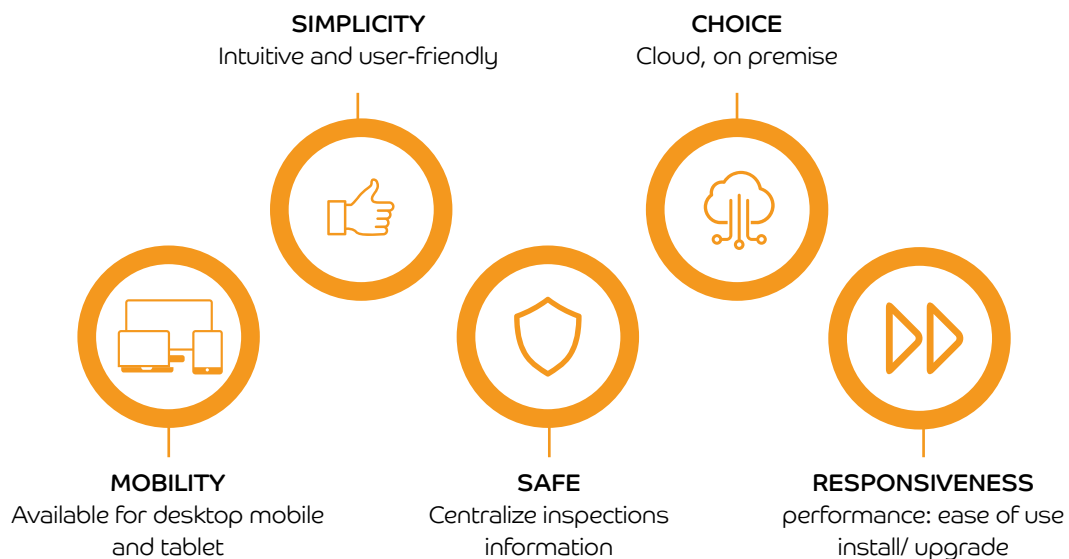
FALL SAFE Inspector® an intelligent system that uses Radio Frequency Identification (RFID) and Quick Response Code (QR Code) allows you to identify and manage all information related to your PPE inspection program.

With 3 available modules, FALL SAFE Inspector® gives you: Simplicity; Choice; Mobility; Safety and Responsiveness, as it addresses the real-world challenges companies faces as they look to grow in PPE inspection service.

Empowers competent person technician by offering a Choice of deployment reports including on premise, hosted or in the cloud.

FALL SAFE Inspector® features includes: a user friendly and Multilanguage interface, preloaded checklists, tracking your equipment, immediate retrieval of information and much, much more!

FALL SAFE® INSPECTOR® AGILE APPLICATION





FALL PROTECTION HARNES

SPIDER FALL ARREST HARNESS COMFORT AT WORK IS OUR SECRET

FS243.01

SPIDER™ Combo 1 - HARNESS

SIZE:
S/M
L/XL
XXL

WEIGHT:
2 kg
2,1 kg
2,2 kg

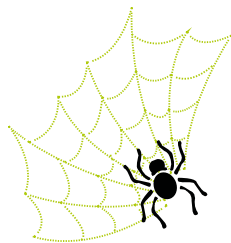
EAN:
5605423571172
5605423571080
5605423820188

STANDARD:
EN 358:1999
EN 361:2002
EN 813:2008
EN 365:2004

The genuine SPIDER™ Arachnida chest harness (FS243.04) with 4 arms for optimized upright body position and support for extended working hours at difficult access combined with the Spider sit harness (FS243.03).

- Dorsal aluminium D-ring attachment point for connecting a fall arrest system as EN361, D-ring can be hidden and stored to not get in the way of a bag or load on the back
- Standing chest aluminium D-ring for fall arrest and on the 2 lower arms openable quick connect buckles, this means a greatly improved user comfort and easy to take on and of the harness
- 2 lateral aluminium D-rings attachment points for positioning as EN358 with added parking position function to avoid undesired catching during work
- Ventral aluminium D-ring attachment point as EN813 for sit harness, rope access, divides the user weight evenly between the waist belt and the leg straps at suspended work for optimal comfort and control
- Croc™ padding with excellent impact and abrasion resistance with breathable mesh and foam for highest comfort during long days of use
- A pear karabiner with triple locking action is the link between Arachnida Chest and SPIDER™ Sit harness and when connected forms a full body harness compliant with EN361
- Seat loops for the SERRIO seat which will free up space at ventral loop for other work systems
- SERRIO seat and CLAW chest ascender available separately
- FALL SAFE INSPECTOR® Ready
- 9 point size adjustment





SPIDER

THE NEW ROPE ACCESS HARNESS

FS243.02

SPIDER™ Combo 2 - HARNESS

SIZE:
S/M
L/XL
XXL

WEIGHT:
1,8 kg
1,9 kg
2,0 kg

EAN:
5605423820355
5605423751215
5605423751222

STANDARD:
EN 358:1999
EN 361:2002
EN 813:2008
EN 365:2004

The classic Spider Araneae chest harness (FS243.05) with V-styling for all-round rope access and rescue activities combined with the Spider sit harness (FS243.03)

- Dorsal aluminium D-ring attachment point for connecting a fall arrest system as EN361, D-ring can be hidden and stored to not get in the way of a bag or load on the back
- Standing chest aluminium D-ring attachment point as EN361 for connecting a fall arrest system
- 2 lateral aluminium D-rings attachments points for positioning as EN358 with added parking position function to avoid undesired catching during work
- Ventral aluminium D-ring attachment point as EN813 for sit harness, rope access, divides the user weight evenly between the waist belt and the leg straps at suspended work for optimal comfort and control
- Croc™ padding with excellent impact and abrasion resistance with breathable mesh and foam for highest comfort during long days of use
- A pear karabiner with triple locking action is the link between Arachnida Chest and SPIDER™ Sit harness and when connected forms a full body harness compliant with EN361
- Seat loops for the SERRIO seat which will free up space at ventral loop for other work systems
- SERRIO seat and CLAW chest ascender available separately
- FALL SAFE INSPECTOR® Ready
- 7 point size adjustment





STATIC ROPES



Designed and certified to comply with the requirements CE EN1891, Static Ropes are a key product for usage with all our Harnesses and auxiliary accessories.



Manufactured using blends of different fibres that allow a combination of Static, Dynamic and Heat Resistant properties that provide maximum performance.



Produced in 10.5, 11 and 12 mm, in 3 basic colours (Black, White and Red). White and Black colours are supplied with 4 combination of marker years (Orange, Pink, Green and Yellow).



Adapted to a wide range of industries.



DIAMETER mm	WEIGHT (Kg/100)	BREAKING STRENGTH Kgf	LENGTHS METER
10.5	7.1	3400	50, 100 and 200
11	7.8	3700	50, 100 and 200
12	9.5	4500	50, 100 and 200



All our harnesses are designed to provide maximum comfort, with constant changes depending on the specific requirements of the user.



For this reason, all ropes and accessories are adapted to the new requirements and as such, permanent development is conducted.



Whenever using Ropes, make sure a previous inspection is conducted; in case of doubt ask a Competent Person to run an inspection. Above all, Feel Safe.



FS33300

DSD PLUS BLACK - DESCENDER

- Double stop descender for rope work
- Strength 25 kN
- Maximum load EN12841 : 200 kg
- Load Limits EN341 : 30kg-160 k
- Maximum descend 190 m

WEIGHT

0,41 kg

EAN

5605423640076

STANDARD

EN 341
EN12841



FS33344

SPARROW 200R - DESCENDER

- Self-braking descender for rope work
- To be used only with static and semi static ropes certified to EN 1891 type A - 11 mm
 - Maximum rated load 200 kg/210 kg
 - Maximum descend 180 m

WEIGHT:

0,52 kg

EAN:

5605423820737

STANDARD:

EN 341:2011-2A WLL 200 kg
EN 12841:2006-C WLL 210 kg



FS33330 / FS33331

ONYX - PRO LEFT / RIGHT HAND ROPE CLAMP

WEIGHT

0,215 Kg

EAN

5605423640113
5605423640120

STANDARD

EN567:2013
EN12841:2006-B

- Ergonomic rubber handle prevents hand slipping
- Rope anti-jamming release system that activates at the slightest downward movement
- Three slots in the cam to prevent the accumulation of mud
- For use with rope: 8-13mm
- 2 holes for connection
- Maximum rated load 100kg



FS33320

GABBRO - ROPE GRAB

WEIGHT

0,17 Kg

EAN

5605423640878

STANDARD

EN353-2:2003
EN358:2001

- Light, All-in-one and compact
- All-in-one fall arrester: rope adjuster, rope tool
- Weightless and handy to carry and to work.
- It can be manually stopped on the rope
- Maximum rated load 100kg
- Recommended rope: FSR01, FS630



FS8050 / FS8051

CLAW - VENTRAL ROPE CLAMP KIT

WEIGHT

0,1 kg

EAN

5605423820294
5605423820115

STANDARD

EN 567:2013
EN 12841:2006-B

- Easy to install for ascending ropes
- Can be attached easily to the chest and ventral connector
- Compatible with harness: FS227, FS243, FS2010
- Available FS8050: Black color and FS8051: Lime color



FS33330 / FS33331

SHELL- FLEXIBLE PROTECTION

SIZE

0.40m

WEIGHT

0.060 kg

EAN

5605423820379

- PVC High resistance
- Velcro closure
- Rope cord



OUR PROPOSALS FOR SAFETY AT WORK IN

WIND FARMS / OFFSHORE
ROPE ACCESS

OFFSHORE FISH FARMS

CONSTRUCTION/SCAFFOLDING

ARBORICULTURE

On each of the sectors covered, we propose different levels of Harnesses, depending on the comfort provided to the user.

In the Arboriculture Sector, we work in cooperation with Workware, proposing their designs: Simarghu, Butterfly and Dragonfly.

WIND FARMS OFFSHORE



WIND FARMS / OFFSHORE
PROFESSIONAL - PREMIUM

FS222

ULTRA - HARNESS

SIZE
S/M
L/XL
XXL

WEIGHT
1,4 kg
1,5 kg
1,6 kg

EAN
5605423570090
5605423570106
5605423570113

STANDARD
EN 358:1999
EN 361:2002

The classic harness with integrated 3-D support belt

- 1 Dorsal D-ring + 2 front loops for fall arrest
- 2 side D-rings for work positioning
- Croc™ padding with excellent impact and abrasion resistance with breathable mesh and foam for highest comfort during long days of use
- 3-D ergonomic Support Belt
- IZY quick connect aluminum buckles
- Grabba lanyard keepers
- Fall arrest indicators
- FALL SAFE INSPECTOR® Ready
- 6 Point size adjustment



FS240

FLASH - HARNESS

SIZE
S/M
L/XL
XXL

WEIGHT
1,9 kg
2,0 kg
2,1 kg

EAN
5605423570687
5605423571219
5605423571226

STANDARD
EN 358:2001
EN 361:2002
EN 813:2009

The technical harness that is easy to wear

- 1 Dorsal D-ring and 2 front loops for fall arrest
- 2 side D-rings for work positioning
- Sit harness with 2 ventral loops for rope access
- Croc™ padding with excellent resistance to abrasion and impact and breathable mesh and foam for highest comfort for long days of use
- 3-D ergonomic Support Belt
- IZY quick connect aluminum buckles
- Grabba lanyard keepers
- Fall arrest indicators
- FALL SAFE INSPECTOR® Ready
- 7 Point size adjustment



FS240-1

FLASH VERTIX - HARNESS

SIZE
S/M
L/XL
XXL

WEIGHT
2,2 kg
2,3 kg
2,4 kg

EAN
5605423571233
5605423571240
5605423571257

STANDARD
EN 358:2001
EN 361:2002
EN 813:2009

The technical harness for ladder climbers

- 1 Dorsal D-ring and 2 front loops for fall arrest
- 2 Front ladder loops for fall arrest
- 2 Side D-rings for work positioning
- 2 Ventral loops for sit harness, rope access
- Croc™ padding with excellent resistance to abrasion and impact and breathable mesh and foam for highest comfort for long days of use
- 3-D ergonomic Support Belt
- IZY quick connect aluminum buckles
- Grabba lanyard keepers
- Fall arrest indicators
- FALL SAFE INSPECTOR® Ready
- 7 Point size adjustment



WIND FARMS / OFFSHORE
BASIC CONFORT - MEDIUM

FS2026

BERKUT 6 - FALL ARREST HARNESS

SIZE
 S/M
 L/XL
 XXL

EAN
 5605423270877
 560542327081
 5605423270884

STANDARD
 EN 361:2002
 EN 358:1999
 EN 365:2004

- 1 dorsal D-ring and 2 front loops for attachment to fall arrest systems
- 2 side D-rings for work positioning Comfort paddings at shoulder and legs
- Size adjustment at shoulders, waist and legs straps provides a perfect fit to the user
- Harness built in two colors for easier orientation when putting on
- Easy and fast to put on safety harness with deluxe buckles in high strength steel
- Low sit support strap to take up forces during a fall

Material

- Webbing Polyester
- Metal parts Steel



WIND FARMS / OFFSHORE
BASIC ESSENTIAL

FS2007

BERKUT 2 - FALL ARREST HARNESS

SIZE
 Universal

WEIGHT
 1,39 kg

EAN
 5605423660074

STANDARD
 EN 358:1999
 EN 361:2002
 EN 365:2004

- 1 dorsal D-ring and 2 front loops for attachment of fall arrest systems
- Size adjustment at chest, shoulders, waist and legs straps provides a perfect adjustment to the user.
- 2 side D-ring for work positioning
- Harness built in two colors for easier orientation of harness when put on.
- Support strap stays low and comfortable, takes up forces during a fall.
- Comfortable and ergonomic backrest.

Material

- Webbing Polyester
- Metal parts Steel



Sector	Component	Professional - Premium	Basic Comfort - Medium	Basic - Essential
Wind Farms / Offshore	Work Position Lanyard	FS053K-2m	FS052H-2m	FS052H-2m
	Lanyard with energy absorber	FS505-AB-1,5m/ FS596-AB-1,5m	FS550-LN-1,5m	FS516-LN-1,5m
	Anchor line	FS630 + FS33320	FS670 (2xFS802)	FS670 (2xFS802)
	SRL Block	FS921/FS923	na	na



ROPE ACCESS

FS243.01

SPIDER™ Combo 1 - HARNESS

SIZE
S/M
L/XL
XXL

WEIGHT
2 kg
2,1 kg
2,2 kg

EAN
5605423571172
5605423571080
5605423820188

STANDARD
EN 358:1999
EN 361:2002
EN 813:2008
EN 365:2004

The genuine
SPIDER™ Arachnida
chest harness



PLEASE SEE FULL DETAILS ON PAGE 8

FS243.02

SPIDER™ Combo 2 - HARNESS

SIZE
S/M
L/XL
XXL

WEIGHT
1,8 kg
1,9 kg
2,0 kg

EAN
5605423820355
5605423751215
5605423751222

STANDARD
EN 358:1999
EN 361:2002
EN 813:2008
EN 365:2004

The classic Spider
Araneae chest
harness



PLEASE SEE FULL DETAILS ON PAGE 9

ROPE ACCESS
PROFESSIONAL - PREMIUM

FS227

ENERGY - HARNESS

SIZE
 S/M
 L/XL
 XXL

WEIGHT
 1,9 kg
 2,0 kg
 2,1 kg

EAN
 5605423570236
 5605423570229
 5605423570243

STANDARD
 EN 358:2001
 EN 361:2002
 EN 813:2009

The heavy duty rope access harness

- 1 Dorsal D-ring + 1 Chest D-ring for fall arrest
- 1 Ventral D-ring for sit harness, rope access
- 2 side D-rings for work positioning
- Croc™ padding with excellent resistance to abrasion and impact and breathable mesh and foam for highest comfort for long days of use
- 3-D ergonomic Support Belt
- IZY quick connect aluminum buckles
- Grabba lanyard keepers
- Fall arrest indicators
- FALL SAFE INSPECTOR® Ready
- 7 Point size adjustment



ROPE ACCESS
BASIC CONFORT MEDIUM

FS2010

BERKUT 3 FALL ARREST HARNESS

SIZE
 S/M
 L/XL
 XXL

WEIGHT
 2,49 kg

EAN
 5605423660319
 5605423660197
 5605423660210

STANDARD
 EN 358:1999
 EN 361:2002
 EN 813:2008
 EN 365:2004

- 1 dorsal D-ring and 1 front D-ring for attachment of fall arrest systems
- 2 side D-rings for work positioning and 1 ventral D-ring for work suspension
- Size adjustment at dorsal, chest, waist and legs for perfect fit
- Harness built in two colors for easier orientation of harness when put on
- Rings for suspension tools lanyards
- Comfort paddings at shoulders, waist belt and leg straps for optimum body support
- Standard buckles and D-rings in high strength steel

Material

- Webbing Polyester
- Metal parts Steel



Sector	Component	Professional - Premium	Basic Comfort - Medium	Basic - Essential
Rope Access	Work Position Lanyard	FS052-2m/FS053K-2m	FS052H-2m	na
	Lanyard with energy absorber	FS502R-AB-1,5m	FS052H-2m	na
	Anchor line	na	na	na
	SRL Block	na	na	na

AQUACULTURE OFFSHORE FISH FARMS



AQUACULTURE / OFFSHORE FISH ARMS
PROFESSIONAL - PREMIUM

FS222

ULTRA - HARNESS

SIZE
S/M
L/XL
XXL

WEIGHT
1,4 kg
1,5 kg
1,6 kg

EAN
5605423570090
5605423570106
5605423570113

STANDARD
EN 358:1999
EN 361:2002

The classic harness with integrated 3-D support belt

- 1 Dorsal D-ring + 2 front loops for fall arrest
- 2 side D-rings for work positioning
- Croc™ padding with excellent impact and abrasion resistance with breathable mesh and foam for highest comfort during long days of use
- 3-D ergonomic Support Belt
- IZY quick connect aluminum buckles
- Grabba lanyard keepers
- Fall arrest indicators
- FALL SAFE INSPECTOR® Ready
- 6 Point size adjustment



FS240

FLASH - HARNESS

SIZE
S/M
L/XL
XXL

WEIGHT
1,9 kg
2,0 kg
2,1 kg

EAN
5605423570687
5605423571219
5605423571226

STANDARD
EN 358:2001
EN 361:2002
EN 813:2009

The technical harness that is easy to wear

- 1 Dorsal D-ring and 2 front loops for fall arrest
- 2 side D-rings for work positioning
- Sit harness with 2 ventral loops for rope access
- Croc™ padding with excellent resistance to abrasion and impact and breathable mesh and foam for highest comfort for long days of use
- 3-D ergonomic Support Belt
- IZY quick connect aluminum buckles
- Grabba lanyard keepers
- Fall arrest indicators
- FALL SAFE INSPECTOR® Ready
- 7 Point size adjustment



FS240-1

FLASH VERTIX - HARNESS

SIZE
S/M
L/XL
XXL

WEIGHT
2,2 kg
2,3 kg
2,4 kg

EAN
5605423571233
5605423571240
5605423571257

STANDARD
EN 358:2001
EN 361:2002
EN 813:2009

The technical harness for ladder climbers

- 1 Dorsal D-ring and 2 front loops for fall arrest
- 2 Front ladder loops for fall arrest
- 2 Side D-rings for work positioning
- 2 Ventral loops for sit harness, rope access
- Croc™ padding with excellent resistance to abrasion and impact and breathable mesh and foam for highest comfort for long days of use
- 3-D ergonomic Support Belt
- IZY quick connect aluminum buckles
- Grabba lanyard keepers
- Fall arrest indicators
- FALL SAFE INSPECTOR® Ready
- 7 Point size adjustment



AQUACULTURE / OFFSHORE FISH ARMS
BASIC CONFORT - MEDIUM

FS2026

BERKUT 6 - FALL ARREST HARNESS

SIZE
S/M
L/XL
XXL

EAN
5605423270877
560542327081
5605423270884

STANDARD
EN 361:2002
EN 358:1999
EN 365:2004

- 1 dorsal D-ring and 2 front loops for attachment to fall arrest systems
- 2 side D-rings for work positioning
- Comfort paddings at shoulder and legs
- Size adjustment at shoulders, waist and legs straps provides a perfect fit to the user
- Harness built in two colors for easier orientation when putting on
- Easy and fast to put on safety harness with deluxe buckles in high strength steel
- Low sit support strap to take up forces during a fall

Material

- Webbing Polyester
- Metal parts Steel



AQUACULTURE / OFFSHORE FISH ARMS
BASIC ESSENTIAL

FS2007

BERKUT 2 - FALL ARREST HARNESS

SIZE
Universal

WEIGHT
1,39 kg

EAN
5605423660074

STANDARD
EN 358:1999
EN 361:2002
EN 365:2004

- 1 dorsal D-ring and 2 front loops for attachment of fall arrest systems
- Size adjustment at chest, shoulders, waist and legs straps provides a perfect adjustment to the user.
- 2 side D-ring for work positioning
- Harness built in two colors for easier orientation of harness when put on.
- Support strap stays low and comfortable, takes up forces during a fall.
- Comfortable and ergonomic backrest.

Material

- Webbing Polyester
- Metal parts Steel



Sector	Component	Professional - Premium	Basic Comfort - Medium	Basic - Essential
Aquaculture / Offshore Fish Farms	Work Position Lanyard	FS053K-2m	FS052H-2m	FS052H-2m
	Lanyard with energy absorber	FS505-AB-1,5m	FS550-LN-1,5m	FS516-LN-1,5m
	Anchor line	na	na	na
	SRL Block	FS920-TC/FS921	FS700	na



CONSTRUCTION SCAFFOLDING

CONSTRUCTION / SCAFFOLDING
PROFESSIONAL - PREMIUM

FS242

LITE - HARNESS

SIZE:
S/M
L/XL
XXL

WEIGHT:
0,9 kg
1,0 kg
1,1 kg

EAN:
5605423570809
5605423570816
5605423570823

STANDARD:
EN 361:2002
EN 365:2004

The best selling ultra light comfort harness

- 1 Dorsal loop + 2 front loops for fall arrest
- Low leg straps for improved comfort
- Croc™ padding with excellent impact and abrasion resistance with breathable mesh and foam for highest comfort during long days of use
- IZY quick connect aluminum buckles
- Grabba lanyard keepers
- Fall arrest indicators
- FALL SAFE INSPECTOR® Ready
- 5 Point size adjustment



FS224

SCAFFOLDER - HARNESS

SIZE
S/M
L/XL
XXL

WEIGHT
1,9 kg
2,0 kg
2,1 kg

EAN
5605423570687
5605423571219
5605423571226

STANDARD
EN 358:2001
EN 361:2002
EN 813:2009

The harness developed especially for the scaffolders

- 1 Dorsal D-ring + 1 chest D-ring for fall arrest systems
- Low legs straps for improved comfort
- Croc™ padding with excellent resistance to abrasion and impact and breathable mesh and foam for highest comfort for long days of use
- IZY quick connect aluminum buckles
- Grabba lanyard keepers
- Fall arrest indicators
- FALL SAFE INSPECTOR® Ready
- 5 Point size adjustment



FS202

CLASSIC - HARNESS

SIZE:
S/M
L/XL
XXL

WEIGHT:
1,1 kg
1,2 kg
1,3 kg

EAN:
5605423751383
5605423750014
5605423751376

STANDARD :
EN 361:2002

The classic harness with proven comfort and strength

- 1 Dorsal D-ring + 2 front loops for fall arrest
- Croc™ padding with excellent impact and abrasion resistance with breathable mesh and foam for highest comfort during long days of use
- IZY quick connect aluminum buckles
- Grabba lanyard keepers
- Fall arrest indicators
- FALL SAFE INSPECTOR® Ready
- 5 Point size adjustment



CONSTRUCTION / SCAFFOLDING

BASIC CONFORT - MEDIUM

FS2026

BERKUT 6 - FALL ARREST HARNESS

SIZE

S/M
L/XL
XXL

EAN

5605423270877
5605423270881
5605423270884

STANDARD

EN 361:2002
EN 358:1999
EN 365:2004

- 1 dorsal D-ring and 2 front loops for attachment to fall arrest systems
- 2 side D-rings for work positionong Comfort paddings at shoulder and legs
- Size adjustment at shoulders, waist and legs straps provides a perfect fit to the user
- Harness built in two colors for easier orientation when putting on
- Easy and fast to put on safety harness with deluxe buckles in high strength steel
- Low sit support strap to take up forces during a fall

Material

- Webbing Polyester
- Metal parts Steel



CONSTRUCTION / SCAFFOLDING

BASIC ESSENTIAL

FS2006

AQUILA 2 - FALL ARREST HARNESS

SIZE

Universal

WEIGHT

1,18 kg

EAN

5605423660081

STANDARD

EN 361:2002
EN 365:2004

- 1 dorsal D-ring and 1 chest D-ring for attachment of fall arrest systems
- Size adjustment at chest, shoulders, legs straps provides a perfect adjustment to the user
- Easy and fast to put on safety harness with standard buckles in high strength steel
- Harness built in two colors for easier orientation of harness when put on
- Support straps connecting the legs stays low and comfortable, takes up forces during a fall

Material

- Webbing Polyester
- Metal parts Steel



Sector	Component	Professional - Premium	Basic Comfort - Medium	Basic - Essential
Construction/Scaffolding	Work Position Lanyard	na	na	na
	Lanyard with energy absorber	FS505-AB-1,5m/ FS596-AB-1,5m	FS550-LN-1,5m	FS516-LN-1,5m
	Anchor line	na	na	na
	SRL Block	FS920-TB/FS925	na	na



ARBORICULTURE

**ARBORICULTURE
PROFESSIONAL - PREMIUM**

SIMARGHU FIRE MALE HARNESS

SIZE GUIDE

S/M

WAIST
27"/34"
THIGH
17"-27"

M/L

WAIST
34"/42"
THIGH
17"-27"

STANDARD
EN 358:2000
EN 813:1997
CE 2721

WEIGHT: 1,5Kg

The Simarghu FIRE has been designed specifically for Arborists and is packed with unique features to give the wearer the very best in comfort, fit and flexibility.

The FIRE (male) harness like most harnesses can be adjusted to fit and offers additional levels of adjust-ability that sets the FIRE apart from the rest of the field.

- Ergonomically designed back and leg pads with breathable open cells reducing heat and dissipating moisture
- Quick clip buckles with assist release and easy adjustability
- Unique lower multi ring designed to give alternative bridge attachment points for superior load balancing – allowing up to 3 rope bridges
- Unique floating bridge allowing lateral movement without twisting harness on body
- Accessory attachment points for all the equipment you will ever need
- Rear leg pad adjusters for optimum comfort, load and balance



SIMARGHU GEMINI FEMALE HARNESS

SIZE GUIDE

S/M

WAIST
26"/34"

THIGH
17"-27"

The GEMINI harness is the industry's first harness that is specifically designed for the female Arborist!

The GEMINI is packed with unique features to give the wearer the very best in comfort, fit and flexibility.

Like most harnesses, the GEMINI can be adjusted to fit and offers additional levels of adjust-ability that sets the GEMINI apart from the rest of the field.

- Ergonomically designed back and leg pads with breathable open cells reducing heat and dissipating moisture
- Quick clip buckles with assist release and easy adjust-ability
- Sub harness for additional anatomical support to female pelvis
- Unique lower multi ring design to give alternative bridge attachment points for superior load balancing – allowing up to 3 rope bridges
- Unique floating bridge allowing lateral movement without twisting harness on body
- Accessory attachment points for all the equipment you will ever need
- Rear leg pad adjusters for optimum comfort, load and balance



**ARBORICULTURE
MEDIUM CONFORT**

BUTTERFLY 2 HARNESS

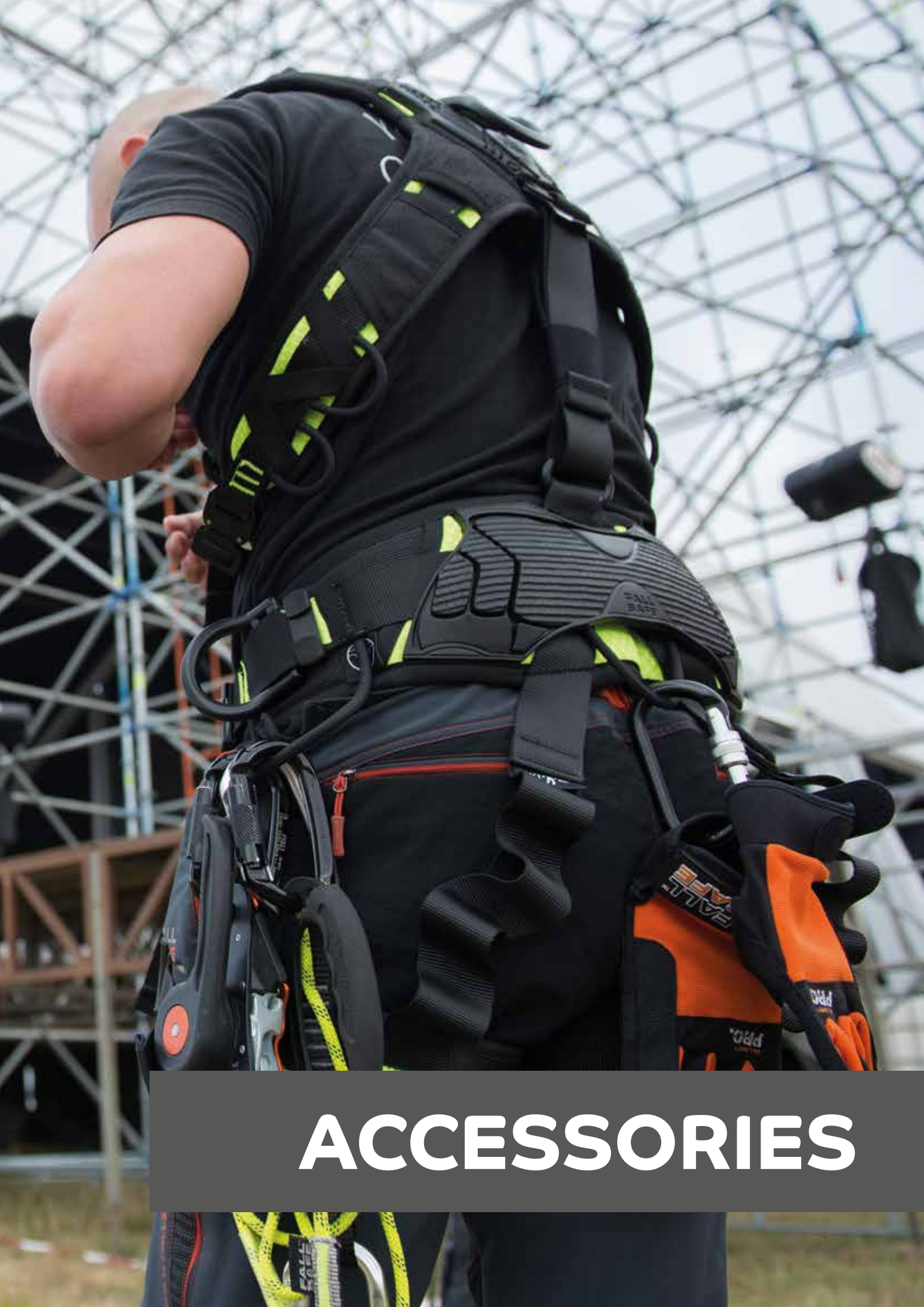


- Tree pruning belt with padded belt and removable legstraps
- Replaceable front anchorage strap for climbing line
- Safe fold away side 'D' rings for positioning lanyard
- Conforms to EN358 and EN813
- Practical rings and loops for accessories

SIZE
S 29" – 46"
M/L 33" – 50"
XL 37" – 54"

DRAGONFLY 2 HARNESS





ACCESSORIES

ACCESSORIES ANCHOR LINE

FS630

PURE ANCHOR LINE

- 1 Karabiner with double action lock and 20mm opening
- Sewn ends protected by plastic sheath
- Combine with FS33344, FS33300, FS33381 descenders
- Combine with FS33320, FS33340 rope grabs
- FALL SAFE INSPECTOR Ready

LENGTH: 5 m 20 m 10 m 25 m 15 m 30 m
 WEIGHT : 0,7 kg - 1,3 kg - 0,9 kg - 1,3 kg - 1,1 kg - 1,7 kg
 EAN: 5605423320244 - 5605423320251 - 5605423320268
 5605423320275 - 5605423320282 - 5605423320299
 STANDARD: EN 353-2:1992



FS33320

GABBRO - ROPE GRAB

- Light, All-in-one and compact
- All-in-one fall arrester: rope adjuster, rope tool
- Weightless and handy to carry and to work.
- It can be manually stopped on the rope
- Maximum rated load 100kg
- Recommended rope: FSR01, FS630

WEIGHT : 0,17 Kg
 EAN: 5605423640878
 STANDARD: EN353-2:2003 - EN358:2001



FS670

BRANTA 1 ANCHOR LINE

- Stainless steel fall arrester with absorber and automatic locking rope grab
- 11 mm Kernmantle rope
- Rope grab moves very easy with user, locks immediately at fall
- Rope core and sheath in polyamide with breaking strength 26000N
- Incorporated energy absorber limits arrest force below 6kN
- Anchor line is supplied without karabiners
- Optional karabiners, choose from FS802 and FS33500-2L
- FS670 anchor lines needs 2pcs karabiners

SIZE: 10m 15m 20m 25m 30m
 WEIGHT: 2,0 kg 2,7 kg 3,7 kg 3,90 kg 6,20 kg
 EAN: 5605423753431 - 5605423753448 - 5605423753455 5605423753462 - 560542375410
 STANDARD: EN353-2:1992



ACCESSORIES KARABINERS

FS820

ALUMINIUM ALLOY

- Strength 25 kN
- Opening 19 mm
- Screw-lock closure
- Catch free nose auto-closure

WEIGHT: 0,079 Kg
 EAN: 5605423400106
 STANDARD: EN 362:2004 - EN 12275:1998 - EN 365:2004



FS802

ZINC-PLATED STEEL OVAL

- Strength 25 kN
- Opening 18 mm
- Screw-lock closure
- Available stainless steel FS846

WEIGHT 0,164 Kg
 EAN 5605423400113
 STANDARD EN 362:2004 - EN 365:2004 - EN 12275:1998



ACCESSORIES WORK POSITIONING LANYARDS



FS053K-2m

GRIPPA WORK POSITIONING LANYARD

- Aluminium hook and karabiner
- Length adjuster Grippa in aluminium with ergo grip
- 12mm Rope kernmantel nylon
- Sewn ends protected by plastic sheath
- FALL SAFE INSPECTOR Ready

SIZE: 2m - 3m
 WEIGHT: 0,62 kg - 0,93 kg
 EAN: 5605423259933 - 5605423300369
 STANDARD: EN358:1999 - EN353-2:2002



FS052

ENDURO WORK POSITIONING LANYARD

- Length adjuster, easy adjust, onehand operated, light aluminium
- 11mm Rope kernmantel nylon
- Light and easy to carry
- Aluminium hook karabiner
- FALL SAFE INSPECTOR Ready

SIZE: 2m - 3m - 4m - 5m
 EAN: 5605423300000 - 5605423300017 5605423300024
 56054233000215
 STANDARD: EN 358:1999



FS052H-2m

WORK POSITIONING LANYARD

- Easy and quick to use with one hand operated length adjuster
- Length adjuster device with precise length adjustment in steel
- Connectors comply with EN362 standard
- Use with a belt as EN358 standard.

Do not use for fall arrest purposes!

SIZE: 2m - 3m
 WEIGHT: 0,93 kg
 EAN: 5605423300277 - 5605423300260
 STANDARD: EN 358:1992

ACCESSORIES LANYARD WITH ENERGY ABSORBER

FS505-AB-1,5m

STRETX - DOUBLE LANYARD WITH ENERGY ABSORBER

- 43 mm stretchable webbing reduce trip hazard
- Y-leg lanyard
- Shoxx energy absorber pack limits impact force below 6 kN

LENGTH: 1,0 m - 1,5 m - 2 m
WEIGHT 0,65 Kg - 0,68Kg- 0,71Kg
EAN 5605423360325 - 5605423360356
5605423361674
STANDARD: EN 354:2010 - EN 355:2002



FS596-AB-1,5m

STREAMLINE - DOUBLE LANYARD WITH ENERGY ABSORBER

- 43mm stretchable tubular webbing > 25kN
- Integrated streamline energy absorber
- Shoxx streamline energy absorber limits impact force below 6kN Max user weight 100kg
- Fall arrest indicators
- FALL SAFE INSPECTOR®Ready

LENGTH: 1,0 m - 1,5 m - 1,75 m
WEIGHT: 0,32 Kg,0,35 Kg,0,38 Kg
EAN: 5605423701494 - 5605423700732 - 56054237522
STANDARD: EN 354:2010 - EN 355:2002



FS502R-AB-1,5m

KORD - DOUBLE LANYARD WITH ENERGY ABSORBER

- 11mm Kernmantel rope
- Y-leg lanyard
- Shoxx energy absorber pack limits impact force below 6kN
- Max user weight 100kg
- Heavy duty stitched ends
- FALL SAFE INSPECTOR®Ready

LENGTH: 1,0 m - 1,5 m - 2 m
WEIGHT: 0,42 Kg - 0,47 Kg - 0,54Kg
EAN: 5605423362145 - 5605423000597
5605423752120
STANDARD: EN 354:2010 - EN 355:2002



FS550-LN -1,5M

CHIMANGO 5 DOUBLE LANYARD WITH ENERGY ABSORBER

- Low stretch Static Kernmantle
- High proportion of sheath to cover ratio which provides improved abrasion protection
- Rope (core and sheath in polyamide), breaking strength >26000N
- Energy absorber with product information label

MATERIAL
• Webbing Polyester
• Rope Polyamide
SIZE: 1m 1.5 m
WEIGHT: 0,45 kg - 0,54 kg - 0,64 kg
EAN: 5605423700527 - 5605423700503 - 5605423700541
STANDARD: EN 354:2010 - EN 355:2002



FS516-LN-1,5m

CHIMANGO 3 DOUBLE LANYARD WITH ENERGY ABSORBER

- Webbing polyester with 25mm, breaking strength >25000N
- Double stitched, incorporated energy absorber which reduces force to 6kN max
- Energy absorber with product information label

MATERIAL

- Webbing Polyester

Tune up your lanyards, choose your connectors, available as L, M, N, H or E



SIZE:
1m 1.5 m
WEIGHT:
0,38 kg
0,50 kg
0,63 kg
EAN:
5605423700275
5605423700299
5605423700268
STANDARD:
EN 354:2010
EN 355:2002

ACCESSORIES SRL BLOCK

FS921

3,5M - FALL ARREST BLOCK

- Aluminium housing
- Cable galvanized steel
- Fall indicators and Rotational swivel
- Aluminium hook with auto-closure

SIZE: 3,5 m
WEIGHT: 1,2 kg
EAN: 5605423460025
STANDARD: EN 360:2002
CNB/P/11.060-A



FS923

7M - FALL ARREST BLOCK

- Plastic housing
- Webbing
- Fall indicators and Rotational swivel
- Aluminum hook with auto-closure

SIZE: 7 m
WEIGHT: 1,8 kg
EAN: 5605423460032
STANDARD: EN 360:2002 - CNB/P/11.060-A



FS920-BC / FS920-TB / FS920 TC

FS920 SERIES - FALL ARREST

- New innovative design, very light weight and durable
- Stainless and carbon steel chassis
- Impact resistant glass filled nylon housing
- Dyneema® cut resistant webbing
- Fall indicators for safer checks
- Rotational Swivel
- One person use 140 kg
- Aluminium hook or karabiner with auto closure

SIZE: 2,10 m 2,05 m 2 m
WEIGHT: 1,29 kg 1,20 kg 0,77 kg
EAN: 5605423820621 56054238204235 605423820614
STANDARD: EN 360:2002



FS700

FALL ARREST BLOCK

- Low maintenance fall arrest block with low weight
- Supplied with polyester webbing 45mm
- Supplied without karabiner for casing, available separately FS802 karabiner
- Tested for one person
- Only vertical use, not sharp edge compliant

SIZE: 2,25 m
WEIGHT: 1,2 kg
EAN: 5605423460001
STANDARD: EN 360:2002



ACCESSORIES
CARRYING BAG



FS8100
XL 60L
CARRYING BAG

- Capacity 60 L
- Wide reinforced opening
- Carrying handle
- Resists water splashes, do not engulf
- Personalized printing available
- Heavy duty PVC

SIZE: 60 L
WEIGHT: 1,7 kg
EAN: 5605423821024



FS8208
ROPE CARGO 40L
ROPE BAG

- Capacity 40 L
- Reinforced opening
- Carrying handle
- Resists water splashes, do not engulf
- Personalized printing available
- Heavy duty PVC

SIZE: 40 L
WEIGHT: 1,0 kg
EAN: 5605423550320



FS8209
ROPE CARGO 46L
ROPE BAG

- Capacity 46 L
- Reinforced opening
- Carrying handle
- Resists water splashes, do not engulf
- Personalized printing available
- Heavy duty PVC

SIZE: 46 L
WEIGHT: 1,2 kg
EAN: 5605423550337



FS8213
ROPE CARGO
BAG 60L

- Capacity 60 L
- Reinforced Base
- Wide reinforced opening
- 2 side pockets
- 1 internal pocket for instructions
- Personalized printing available
- Heavy duty PVC

SIZE: L340 x A650 mm
WEIGHT: 1,7 kg
EAN: 5605423550405



FS8150
CARRYING
BAG STANDARD

- Capacity: 39 L
- Wide reinforced opening
- Booklets, instructions pockets
- Easy opening zipper system

SIZE: 500 mm x 280 mm x 280 mm
WEIGHT: 0,40 kg
EAN: 5605423809374



FS8210
LITE ACCESSORY
BAG 4L

- Capacity 4L
- Bag has multiple inner compartments and is closed by a pulling string and barrel lock
- Heavy Duty PVC

SIZE: 160mm x 200 mm
WEIGHT: 0,9 Kg
EAN: 5605423550375



ACCESSORIES
GLOVES

FS9306
GLOVES

- The FALL SAFE® PRO gloves was designed to improve the user's performance and make work easier and safer. It was specially adapted to professional workers at height, made with highest quality material as synthetic leather and stretch nylon fabric with Kevlar® palm. Key features and specifications
- Made of resistant synthetic leather
- Reinforced Kevlar® palm for greater durability and strength
- Black and orange stretch Nylon® fabric for excellent shape and superb comfort
- Velcro closure for precise adjustment
- Half-finger version makes for finest touch control
- With hook for better organization when not in use, easily attach to harness.

Intended Use All work activities involving work at height like climbing, rope access, rescue, mechanical, etc

Protective gloves and a safety helmet is an essential combination to your fall protection equipment when working at heights



SIZE: S - M - L - XL - XXL
EAN: 5605423821093 - 5605423751499 - 5605423751482 - 5605423821079 - 5605423821086
STANDARD: EN 420:2003+A1:2009 - EN 388:2003

ACCESSORIES - HELMETS

FS3050, FS3054 ORBIT - HELMET

The FALL SAFE® ORBIT Helmet is the supreme safety helmet when working at heights and rescue. It provides the user with an effective protection from falling objects, bumps or falls. With attractive and functional 3D-design with available accessories as visor, ear muffs and headlamps. Super lightweight, fresh air cooling system, exchangeable comfort paddings and made with highest quality material in ABS/PP, the ORBIT Helmet is the ultimate protection for your head.

Key features and specifications:

- Material: Shell in ABS/PP, Nylon® chin strap and ITW® safety buckle
- Weight: Super lightweight 358 g
- Design: 3D-design for increased strength, shock absorption and functionality, 10 point silver mesh ventilation system, four point Nylon® webbing suspension, chin strap with ITW safety buckle, precise and quick screw lock size adjustment system, hair port design for pony tails
- Accessories: Visor, ear muffs (2 slots), headlamp (4 headlamp clips), exchangeable comfort paddings
- Head circumference: 51-62 cm
- Color: Available in white and black Intended Use All work activities involving work at height like climbing, rope access, rescue, industry, construction, etc.



SIZE: 51 - 62 CM
WEIGHT: 0,375 kg
EAN: 5605423500011 - 5605423500028
STANDARD: EN397:2012+A1:2012

ACCESSORIES SEAT

FS2052 SERRIO - SEAT

- Provides more comfort when suspended from the harness
- Use with our technical harnesses with ventral attachment
- Manufactured with zipper that allows removing the rigid component for easier cleaning/replacement
- IZY Buckles for easy and smooth adjustment of length
- Wide seating area ensures good stability and allows comfortable hanging
- Suspension straps do not press on your thighs
- 3 loops for gear or material suspension
- FALL SAFE INSPECTOR@Ready



WEIGHT: 1,2 kg
EAN: 5605423570458

ACCESSORIES RESCUE

FS900RA PULLSAFE - RESCUE EQUIPMENT



- Descend device DSD Plus for up to 2 persons
- Integrated light weight winch system, avoid cutting the rope!
- Storage bag in PVC
- Maximum load 200 Kg

SIZE: 10 m - 30 m - 20 m
WEIGHT: 2,80 kg - 4,30 kg - 3,55 kg
EAN: 5605423821062 - 5605423430370
5605423430332
STANDARD:
EN 341:2011

FS907 EVAK - RESCUE EQUIPMENT



- Automatic descend systemspeed 0,9 m/ sec.
- Manual lift ascend/descend
- Includes rescue pole with extension up to 3,6 m
- Storage bag with special compartment for the pole

SIZE: 20 m - 60 m - 30 m - 90 m
WEIGHT: 4 kg - 4,7 kg - 4,4 kg - 5,0 kg
EAN: 5605423430301 - 5605423430608
5605423752328 - 5605423430677
STANDARD:
EN 341:2011

FS905 SAVEMAN™ ADVANCE RESCUE EQUIPMENT



- Descend/rescue equipment for 1 person
- Small and compact
- Technora rope
- Manual descend unit, easy to use, anti-panic function.
- Anchor sling included
- Waterproof and vacuum sealed bag
- Up to 100m rope descend
- One time use only

SIZE 15 m - 20 m - 25 m - 30 m - 50 m - 80 m - 100 m
WEIGHT 1,2 kg - 1,5 kg - 2 kg - 2,5 kg 4,8 kg - 7,2 kg - 9 kg
EAN 5605423430226 - 5605423430288 - 5605423430615
5605423430295 - 5605423430622 - 5605423430233
5605423430660
STANDARD EN 341:2011
Class D

ACCESSORIES EXTREME ENVIRONMENTS

FS3610 OFFSHORE - VEST

The fall protection vest for offshore use with inflatable life jacket

- 1 Dorsal D-ring for fall arrest
- 2 side D-rings for work positioning
- 2 large pockets
- Stainless steel standard buckles
- Anti-flame 100% cotton fabric
- FS3610 (150N inflatable lifejacket) FS3620 (275N inflatable lifejacket)
- FALL SAFE® INSPECTOR Ready
- 4 point size adjustment

SIZE: S/M - L/XL - XXL

WEIGHT: 2,9 kg - 3,0 kg - 3,1 kg

EAN: 5605423380019 - 5605423380002 - 5605423380026

STANDARD: EN 358:1999 - EN 361:2002 - ISO 12402



ACCESSORIES FALL PROTECTION VESTS

FS320 SMART - FALL PROTECTION VEST

- 1 Dorsal D-ring and 2 front loops for fall arrest
- 2 side D-rings for work positioning
- 2 large pockets
- IZY quick connect buckle
- Compatible with FS329 Size expander
- Available in colors 10, 20, 30, 40
- Integrated shoulder pad for greater comfort
- FALL SAFE® INSPECTOR Ready
- 4 point size adjustment

SIZE: S/M - L/XL - XXL

WEIGHT: 1,8 kg - 1,9 kg - 2,0 kg

EAN: 5605423101737 - 5605423101744 - 5605423101751

STANDARD: EN471:2003 - EN361:2003



THE FALL PROTECTION VEST WITH INTEGRATED SAFETY HARNESS COMES WITH MANY EXTRA FEATURES TO MAKE THE WORK ON HEIGHT MORE COMFORTABLE AND PROTECT THE WORKER FROM VARIOUS HAZARDS.

ACCESSORIES FALL PROTECTION JACKETS

FS4242 BLASTER - FALL PROTECTION JACKET

- 1 Dorsal D-ring and 2 front loops for fall arrest
- 2 large pockets
- IZY quick connect buckles
- Sports jacket style that moves with you and increases your performance
- Integrated shoulder pad for greater comfort
- High resistance with a waterproof and breathable membrane
- Pockets with zipper to hide loops when they are not in use
- FALL SAFE INSPECTOR® Ready
- 3 point size adjustment

SIZE: S/M - L/XL - XXL

WEIGHT: 2,4 kg - 2,5 kg - 2,6 kg

EAN: 5605423381139 - 5605423381122 - 5605423381146

STANDARD: EN 361:2002



THE FALL FACTOR

Fall factor is a rating used to evaluate the danger of specific scenarios when working at heights. Fall Factor is calculated using the following equation:

$$\text{Fall Factor} = \text{Height of Fall} / \text{Length of Lanyard}$$

In situations where the Fall Factor will be 0 (e.g. the worker is positioned under the anchor point on a tensioned lanyard) or in situations where the Fall Factor is 1 or less and the freedom of movement is limited to 0.6 m or less, positioning equipment is adequate.

Fall arrest equipment must be used for other situations where the Fall Factor is greater than 1 or more freedom of movement is required.

Systems involving Fall Factors include:

Restraint

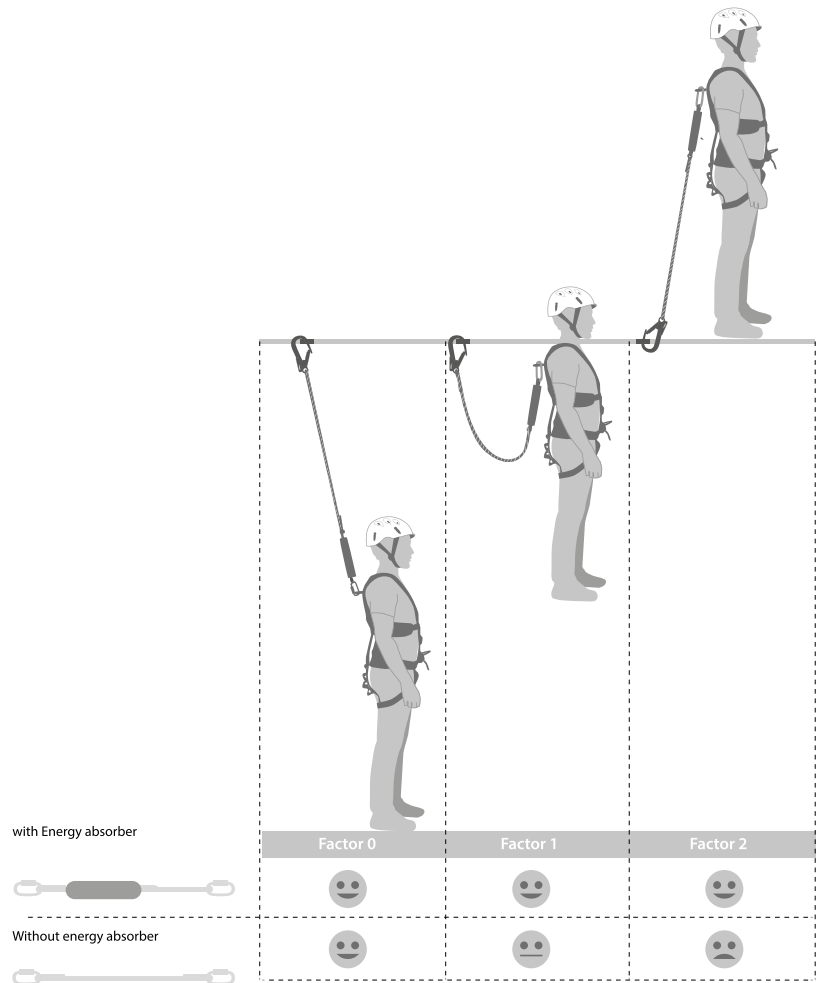
Technique used to prevent a worker from entering a fall risk area (e.g. positioning harness and lanyard EN 358).

Positioning

Technique used to position a worker securely in a fall risk area without creating a Fall Factor scenario (e.g. hanging beneath an anchor point in a positioning harness on a tensioned lanyard EN 358).

Fall Arrest

Technique used to catch and reduce the force of a fall from heights (e.g. use of a Fall Arrest Lanyard EN 354 and Energy Absorbing Lanyard EN 355).



FALL ARREST

Mind the following when using Fall Arrest systems:

- Energy absorbing lanyards must not exceed 2 meters in length (including connectors)
- The maximum extended length for the new Energy Absorber is 1,5m
- The length of a potential fall must always be minimized with the proper gear and rigging
- The possibility of a worker hitting something during a fall must be eliminated
- Avoid systems that could create a Fall Factor greater than 2
- Calculate the clearance distance below the anchor point to ensure that worker cannot hit the ground:

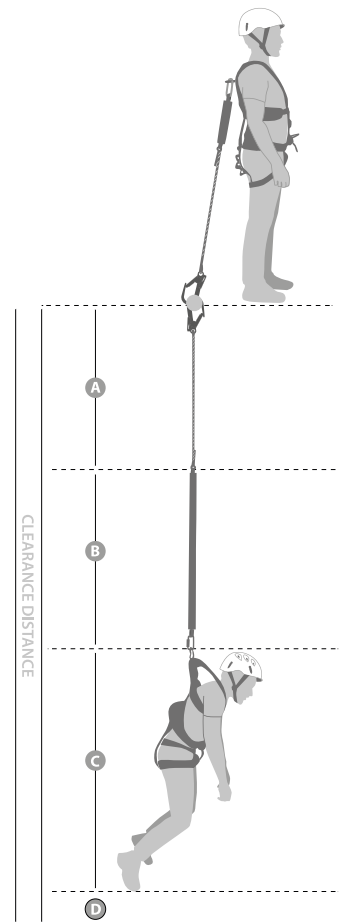
$$\text{Clearance Distance} = A + B + C + D$$

A (Lanyard length)

B (Energy absorber extension)

C (Distance between harness attachment and worker's feet, 1,5 m)

D (Safe distance from the ground, 1 m)



SWING FALL

When deciding on a suitable anchor point you must consider the pendulum effect.

A worker could be in a position that when a fall occurs they could come into contact with obstacles or could land on the floor with severe injuries as a result. The working angle should always be taken into account.

This angle could cause the improper function of some arrest devices, eg. fall arrest block.

When carrying out a risk assessment always read the information manual for each item of the equipment to ensure the correct use.

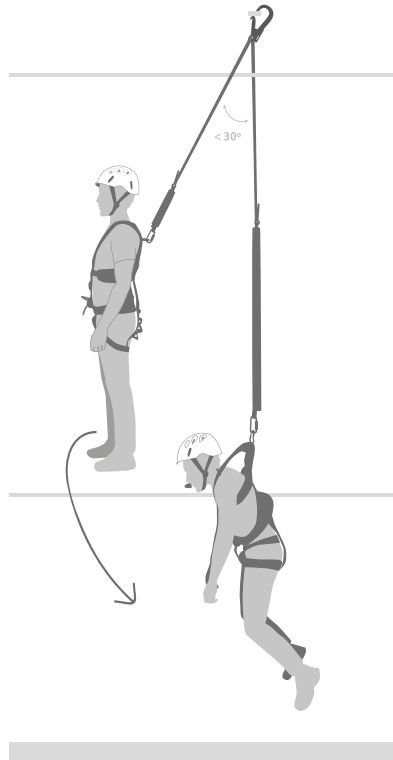
The risk Level is defined by angle between the vertical and the worker. The greater the angle the greater the risk.

Angular displacement < 30°

Low risk of pendulum effect

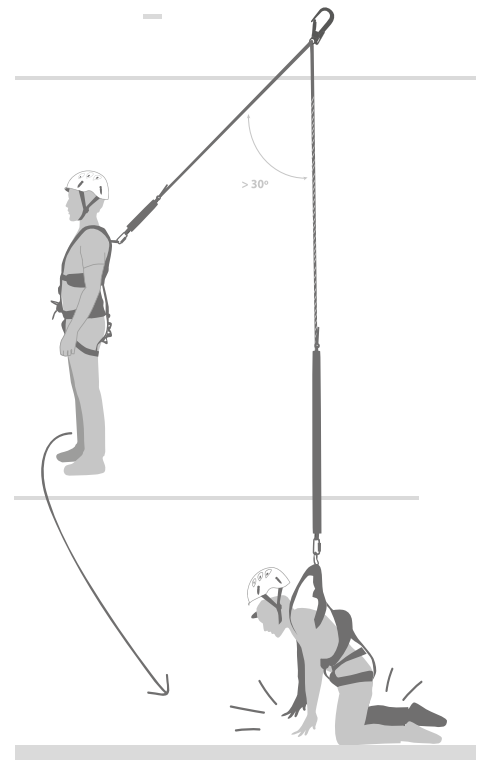
Angular displacement < 30°

Low risk of pendulum effect occurrence



Angular displacement > 30°

High risk of pendulum effect occurrence



ASSEMBLY GUIDE

ANCHOR POINTS



FALL ARREST SYSTEM



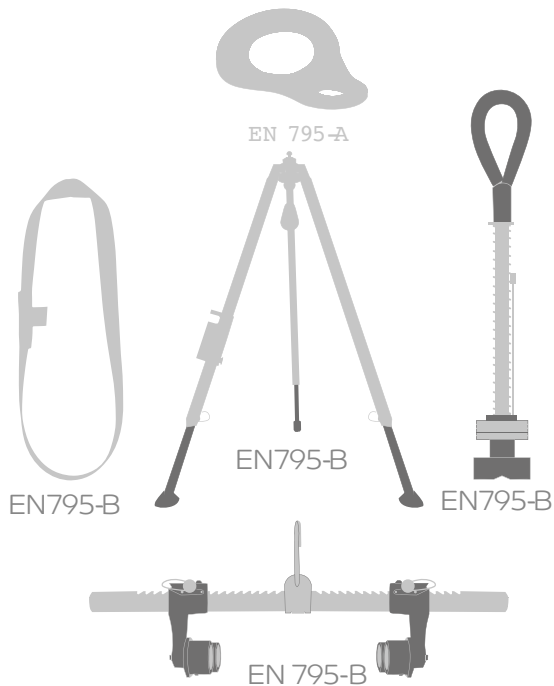
RESCUE SYSTEM



SUSPENSION SYSTEM

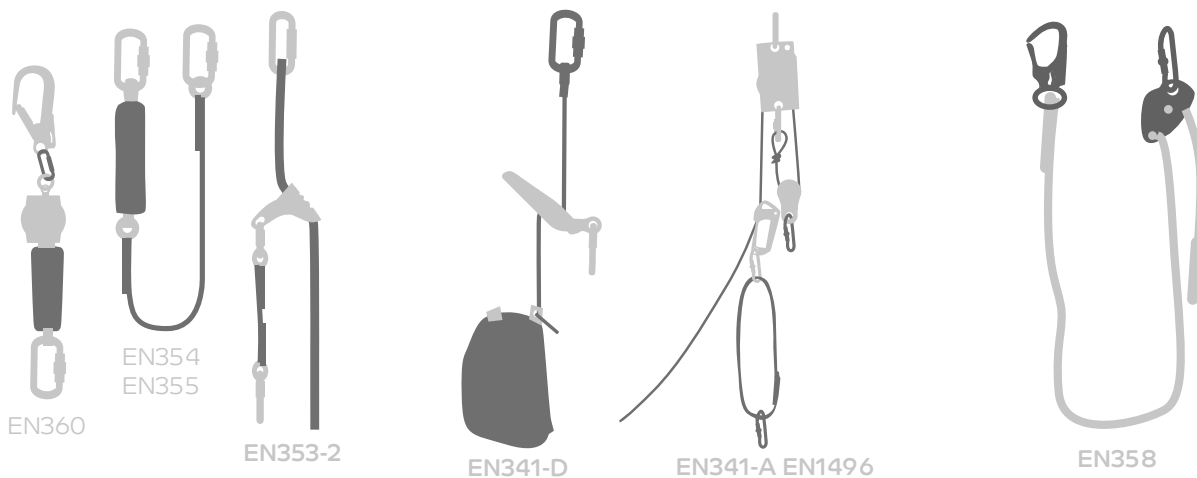


WORK POSITION SYSTEM



ASSEMBLY GUIDE

CONNECTING DEVICES



BODY WEAR

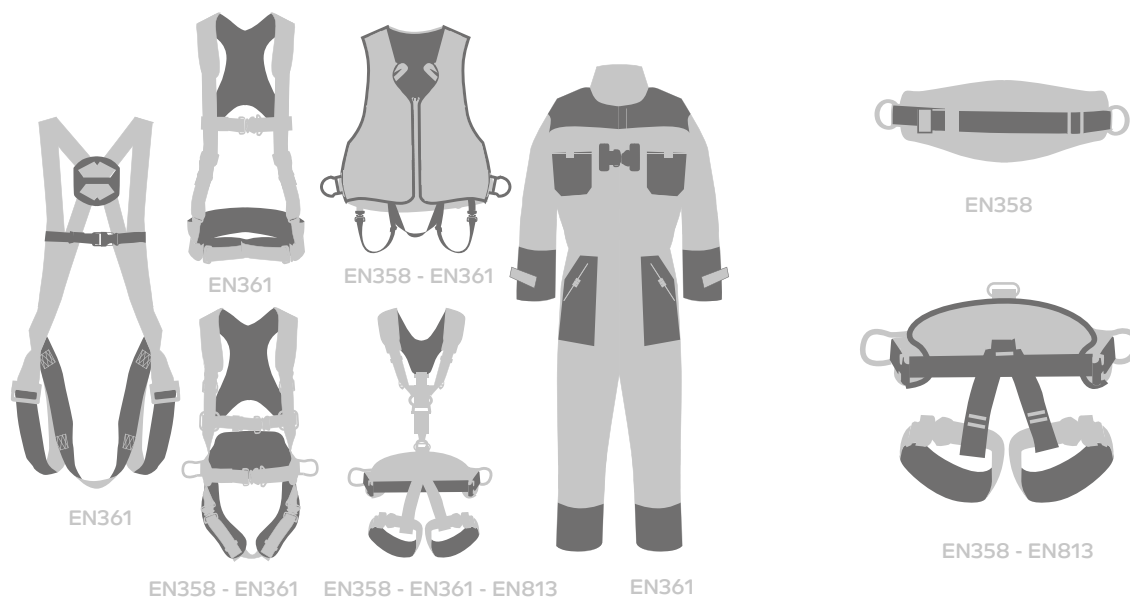
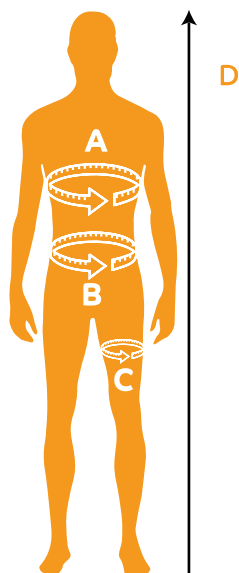


CHART SIZES



	A	B	C	D
S/M	80-120	75-115	45-75	145-180
L/XL	95-130	90-135	55-85	160-195
XXL	110-140	105-150	65-95	175-210
Universal		one size fit most		



10 Ripponden Business Park
Oldham Road,
Ripponden
West Yorkshire,
HX6 4FF
United Kingdom

Phone: (01422) 821000
Fax: (01422) 821007

enquiries@cotesi.co.uk

www.cotesi.co.uk